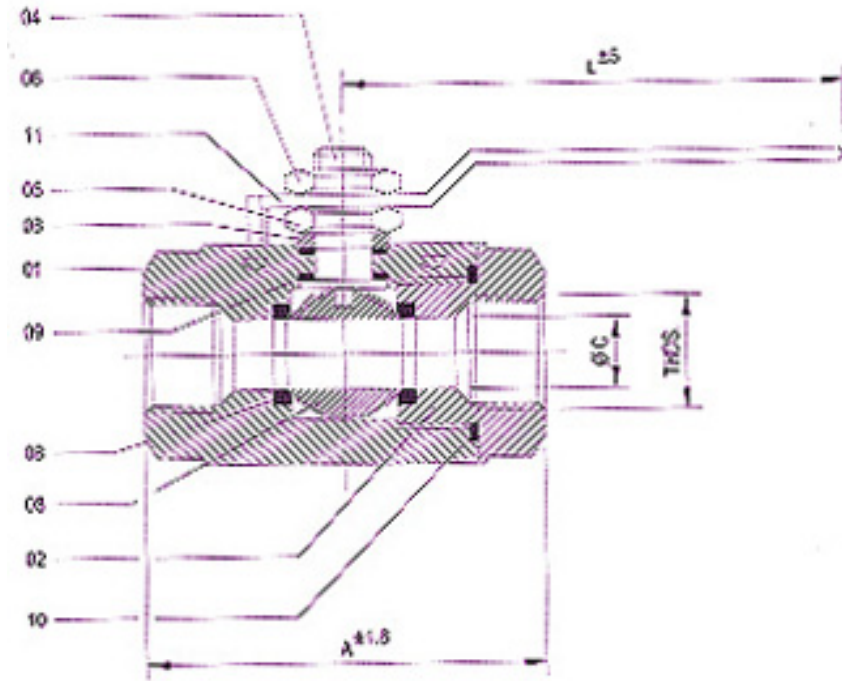


UNIMAC BALL VALVES

Single Piece (Screw End)



Suitable for : - Water, Oil and Gas

Size	A	øC	L	THDS BSP/ BSPT/ NPT
15	73	13	126	1/2"
20	76	19	126	3/4"
25	88	26	126	1"
32	100	33	176	1.1/4"
40	118	39	176	1.1/2"
50	126	51	176	2"
65	152	62	253	2.1/2"
50	170	76	253	3"

all dimesion are in mm

Technical Data

Design & Manufacturing STD	:	BS 5351, API 602, IS:9890
Testing & Inspection STD	:	API 598/ BS : 5146
Face to Face	:	as per ANSI B 16.10
End connections	:	16 Bar max (228 PSI)
Temp. Rating	:	Screwed : (BSP, BSPT, NPT)

No.	Description	Material	Qty.
01	Body	C.I. / C.S. / S.S. 304/ S.S. 316	
02	Body connector	C.I. / C.S. / S.S. 304/ S.S. 316	
03	Ball	AISI 304 / AISI 316	1
04	Stem	AISI 304 / AISI 316r	1
05	Gland nut	AISI 304 / AISI 316	1
06	Gland bush	AISI 304 / AISI 316	1
07	Lock Nut	AISI 304 / AISI 316	
08	Seat Ring	PTFE	
09	Stem Seal	PTFE	
10	Body Sealent ring	PTFE	
11	Wrench	M.S. / S.S.	

Primary service reating & test pressu

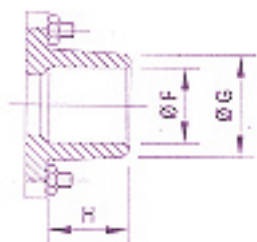
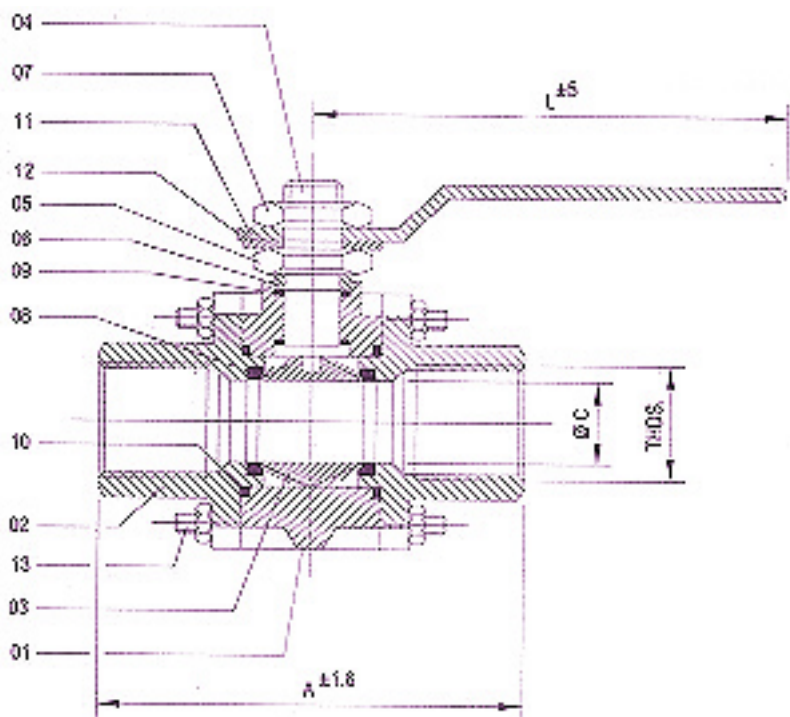
Class	Working press.	HYD. Test pressure		
		Body	Seat	Temp.
150	150 PSIG	500 PSIG	250 PSIG	200 ° F

Air Test - Seat 80 PSIG ± 10 PSIG

Three Piece (Screw End)

Technical Data

Design & Manufacturing STD	: BS 5351, API 602
Testing & Inspection STD	: API 598/ BS : 5146
End Connections	: BSP, BSPT, NPT, SOCKET WELD
Socket Weld & Threaded to	: ANSI B 16.11 / ANSI B 1.20.1



SOCKET WELD END

all dimension are in mm

No.	Description	Material	Qty.
01	Body	C.I./ C.S./ S.S. 304/316 /A 105	1
02	Body connector	C.I./C.S./ S.S. 304/316/A 105	1
03	Ball	AISI 304 / AISI 316	1
04	Stem	AISI 304 / AISI 316	1
05	Gland nut	AISI 304 / AISI 316	1
06	Gland bush	AISI 304 / AISI 316	1
07	Lock Nut	AISI 304 / AISI 316	1
08	Seat Ring	PTFE	2
09	Stem Seal	PTFE	2
10	Body Sealent ring	PTFE	2
11	Wrench	M.S. / S.S.	1
12	Stop	M.S.	1
13	Stud & Nut	C.S./ S.S.	4

Class 150

Size	A	øC	L	THDS. BSP/ BSPT/ NPT	F	G	H
15	91	13	155	1/2"	21.8	29	12.7
20	96	19	160	3/4"	27.3	35	19.0
25	101	25	160	1"	34.1	43	22.0
32	109	32	160	1.1/4"	43.0	54	22.0
40	121	38	178	1.1/2"	49.0	58	22.0
50	131	50	178	2"	61.3	71	23.0

Class 800

Size	A	øC	L	THDS. BSP/ BSPT/ NPT	F	G	H
15	69	13	115	1/2"	21.8	29	12.7
20	80	15	122	3/4"	27.3	35	19.0
25	96	19	153	1"	34.1	43	22.0
32	106	23	178	1.1/4"	43.0	54	22.0
40	116	33	178	1.1/2"	49.0	58	22.0
50	129	36	178	2"	61.3	71	23.0

Suitable for : - Water, Oil and Gas

Primary service rating & test pressure

Class	Working press.	HYD. Test pressure		Temp.
		Body	Seat	
150	150 PSIG	425 PSIG	300 PSIG	200 °F
300	300 PSIG	1100 PSIG	800 PSIG	200 °F
800	800 PSIG	3000 PSIG	2000 PSIG	200 °F

Air Test - Seat 80 PSIG ± 10 PSIG

Note : Due to constant up gradation, dimensions are subject to change by the manufacturer.